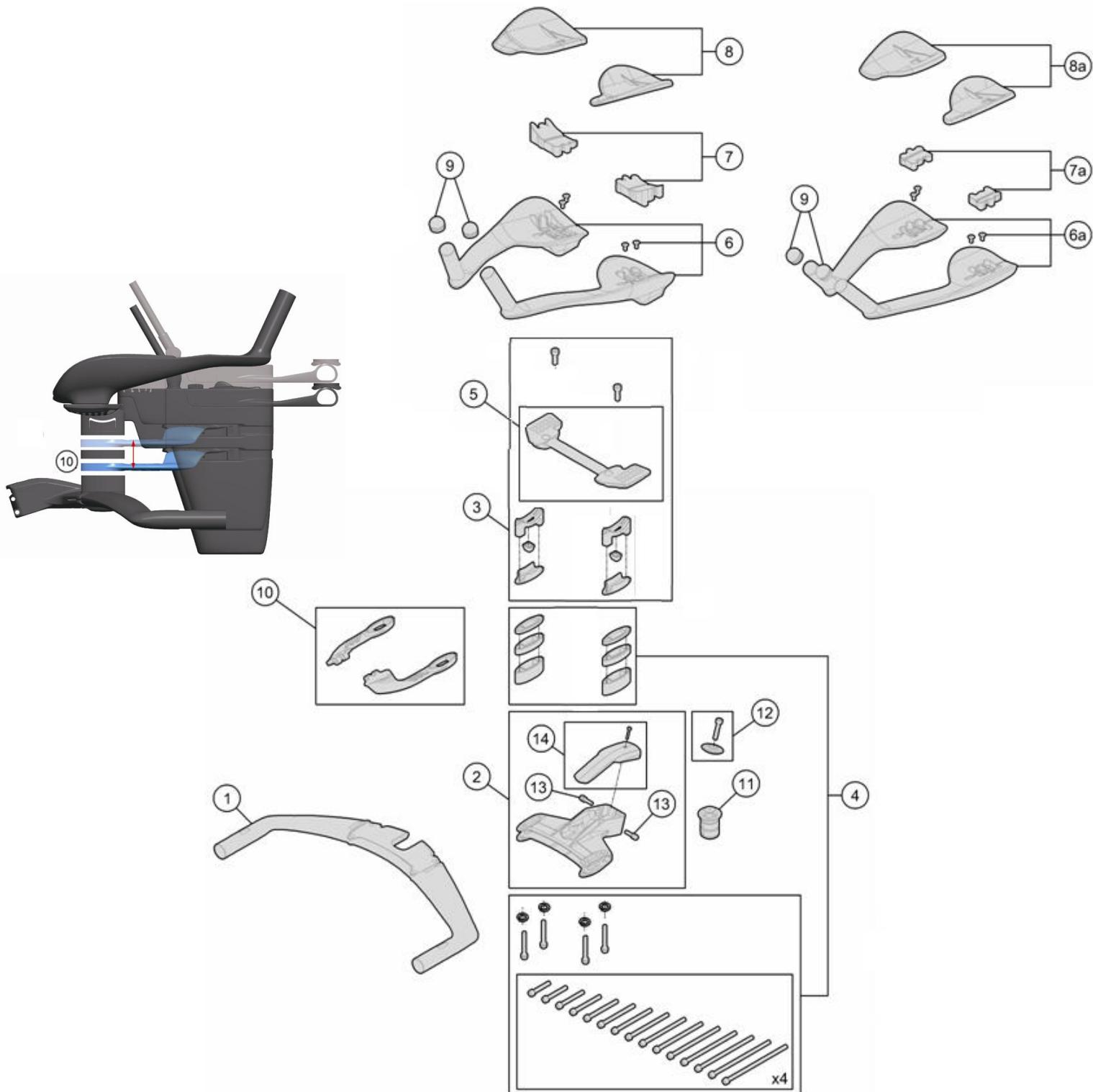


Patent pending Snakebite stem allows for flip-able base bar with internal cable routing

- 670-0344018030 V0210L{HB-KO-Si020/TFE Pro} Metron Aerobar w/SnakeBite Stem+TFE Pro Extensions (L)
- 670-0344017030 V0210M{HB-KO-Si020/TFE Pro} Metron Aerobar w/SnakeBite Stem+TFE Pro Extensions (M)
- 670-0344016030 V0210S{HB-KO-Si020/TFE Pro} Metron Aerobar w/SnakeBite Stem+TFE Pro Extensions (S)
- 670-0382016030 V0230L{HB-KO-Si020/TFE} Metron Aerobar w/SnakeBite Stem+TFE Extensions (L)
- 670-0382019030 V0230M{HB-KO-Si020/TFE} Metron Aerobar w/SnakeBite Stem+TFE Extensions (M)
- 670-0382002030 V0230S{HB-KO-Si020/TFE} Metron Aerobar w/SnakeBite Stem+TFE Pro Extensions (S)

- 670-0328012032 V0203L Metron TFE Pro Extensions (L)
- 670-0328012031 V0203M Meron TFE Pro Extensions (M))
- 670-0328012030 V0203S Metron TFE Pro Extensions (S))
- 670-0361016030 V0219L Metron TFE Extensions (L)
- 670-0361019030 V0219M Metron TFE Extensions (M)
- 670-0361002030 V0219S Metron TFE Extensions (S)



Item No.	FSA Code No.	Description	Notes
1	670-0302000030	V1028 Metron TFA Aerobar with Vision Metron logo	Width 400 mm(c-c)
2	670-0303000000	V0218 Metron SankeBite Stem with Bolts	
3	670-0279000050	E0678 Angle Adjustment Bracket Upper & Lower with bolts & Nut	
4	670-0304000750	MW037 Armrest Stack Spacers Kit with Spacer Bolts	
5	670-0355000010	ME388 Bridge	
6	670-0393038030	V3133L Metron TFE Pro Extension - Left (w/cover, bolts, plug)	★305mm(L)
	670-0394038030	V3134L Metron TFE Pro Extension - Right (w/cover, bolts, plug)	
7	670-0395000110	V0233A Metron TFE Pro Rubber Cover Left & Right	★For Metron TFE Pro Extension
8	670-0375000110	MS367 Armrest Pads Left & Right	★For Metron TFE Pro Extension
9	670-0187000110	MS133 Aero Extension Front Plug	
10	670-0339000680	V0208 Longer Hydration Extension	For use with Metron Front Hydration System
11	160-0050000024	TH-863-1 Compressor Pro	
12	160-0092000AD0	H1019 Compressor Cap with bolt	
13	175-0027000990	ML061 SankeBite Stem Steerer Clamp Bolt	
14	670-0305000030	T2008 Metron SankeBite Stem Cover with bolt	

★Optional Parts

Item No.	FSA Code No.	Description	Notes
6	670-0393037030	V3133M Metron TFE Pro Extension - Left (w/cover, bolts, plug)	285mm(M)
	670-0394037030	V3134M Metron TFE Pro Extension - Right (w/cover, bolts, plug)	
6	670-0393036030	V3133S Metron TFE Pro Extension - Left (w/cover, bolts, plug)	265mm(S)
	670-0394036030	V3134S Metron TFE Pro Extension - Right (w/cover, bolts, plug)	
6a	670-0391017030	V3120L Metron TFE Extension - Left (w/cover, bolts, plug)	300mm(L)
	670-0392017030	V3121L Metron TFE Extension - Right (w/cover, bolts, plug)	
6a	670-0391024030	V3120M Metron TFE Extension - Left (w/cover, bolts, plug)	275mm(M)
	670-0392024030	V3121M Metron TFE Extension - Right (w/cover, bolts, plug)	
6a	670-0391004030	V3120S Metron TFE Extension - Left (w/cover, bolts, plug)	250mm(S)
	670-0392004030	V3121S Metron TFE Extension - Right (w/cover, bolts, plug)	
7a	670-0395000111	V0233B Metron TFE Rubber Cover Left & Right	For Metron TFE Extension
8a	670-0374000110	MS368 Armrest Pads Left & Right	For Metron TFE Extension