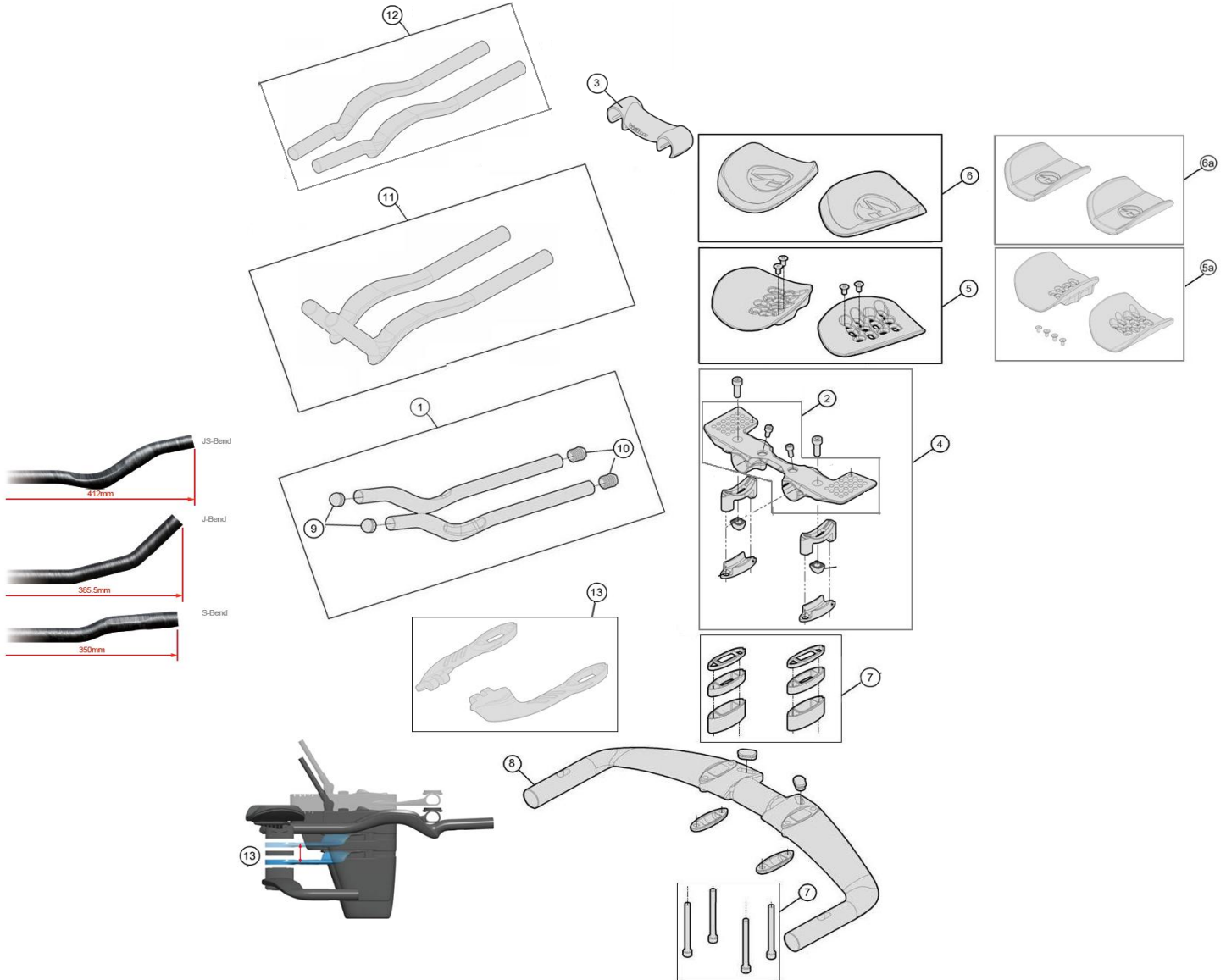


Highly adjustable and customizable Semi-integrated design

670-0261006030 V0180 TriMax Carbon Si JS-Bend HB-KO-Si013Adj



Item No.	FSA Code No.	Description	Notes
1	670-0273000030	V3108 Aero Extension JS-bend L & R	Vision Trimax Carbon ★
2	670-0387000050	V3138 Bridge with bolts	
3	670-0310000110	ME358 Extension Bridge	
4	670-0279000050	E0678 & E0679 Angle Adjustment Bracket Upper & Lower w/bolts & Nut	
5	670-0277000110	V4055 & V4056 Armrest Pad Plate L & R with bolts	For TriMax Carbon
6	670-0278000110	MS032 Armrest Pad Left & Right	
7	670-0280000750	MW037 Armrest Stack Spacers Kit with Spacer Bolts	with Covers
8	670-0281000030	V1023 Metron TFA Base Bar with Covers	Width 400 mm(c-c)
9	670-0187000110	MS133 Aero Extension Front Plug	
10	670-0282000110	MS031 Aero Extension Rear Plug	★ For V3108 Aero Extension JS-bend

★Optional Parts

Item No.	FSA Code No.	Description	Notes
5a	670-0340000111	V0209 R25 Race Armrest Plate L & R with bolts	
6a	670-0347000110	MS084 R25 Race Armrest Pads L & R	
5a+6a	670-0340000110	V0209 R25 Race Armrest Kit	
11	670-0335000030	V3123 Carbon Speed Extension J-bend L & R	Vision Carbon
12	670-0343000030	V3124 Carbon Speed Extension S-bend L & R	Vision Carbon
13	670-0339000680	V0208 Longer Hydration Extension	For use with Metron Front Hydration System
1a	670-0295000030	V3109 Aero Extension J-bend L & R	
1b	670-0052000032	V3079+V3080 Aero Extension S-bend L & R	
10a	67000062000110	MS294 Aero Extension Rear Plug	For Extension JB-Bend (V3109) & S-Bend (V3079/3080)