



# Metron TFA EVO w/Carbon TFE Extensions Installation Instructions

Published – Oct. 2025. ZS248A.v1 © Full Speed Ahead

## Introduction

Congratulations on your Vision product. Please read these instructions and follow them for correct use. Failure to follow the warnings and instructions could result in damage to product not covered under warranty, damage to bicycle; or cause an accident resulting in injury or death. Since specific tools and experience are necessary for proper installation, it is recommended that the product be installed by a qualified bicycle technician. FSA & Vision assumes no responsibility for damages or injury related to improperly installed components.

## Warranty

Full Speed Ahead (FSA) warrants all FSA and Vision products to be free from defects in materials or workmanship for a period of two years after original purchase unless otherwise stated in the full warranty policy. The warranty is non-transferable and valid to the original purchaser of the product only. Any attempt to modify the product in any way such as drilling, grinding, and painting will void the warranty. For more information on warranty policy and instructions for completing a warranty claim, check out the Full Warranty Policy found at our website: <https://www.visiontechusa.com/en/support/warranty-policy>

**⚠ WARNING** Always use a calibrated torque wrench to tighten all screws and bolts when assembling and adjusting the Vision handlebar to the bicycle. Failure to use a calibrated torque wrench can cause damage to the handlebar making it unsafe to ride and is not covered under warranty. Check bolt and screw torque before each ride to ensure they have not loosened during use.

**⚠ WARNING** Periodically inspect your aerobar for any cracks, chips, scratches, and any other visible damage. In the event of an accident do not ride the bicycle until the handlebar has been inspected by an experienced mechanic as the aerobar may be damaged or weakened even if no visible damage is apparent. If there is any visible damage, the aerobar should not be used any further and replaced.

**⚠ WARNING** When changing the Armrest Stack spacers (15), use the correct length bolt (16) as per the chart show in Table 1. Use only FSA supplied bolts. Failure to use the correct length bolt can result in thread stripping of the base bar, failure of base bar, and armrest pad and can cause serious accident or injury.

## Specification

The instruction is for the installation and adjustment of the following Vision Brand components only:

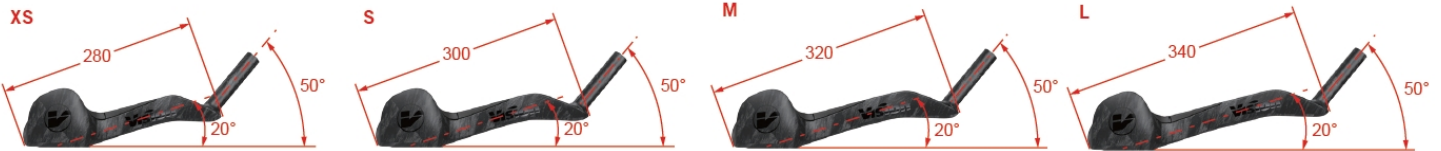
Model Name **Metron TFA EVO w/Carbon TFE Extensions**

- TFE Team Edition : S-300mm, M-320mm, L-340mm
- TFE EVO : XS-280mm, S-300mm, M-320mm, L-340mm
- TFE Pro : S-265mm, M-285mm, L-305mm, XL-325mm

### > TFE Team Edition Size:



### > TFE EVO Size:



### > TFE Pro Size:

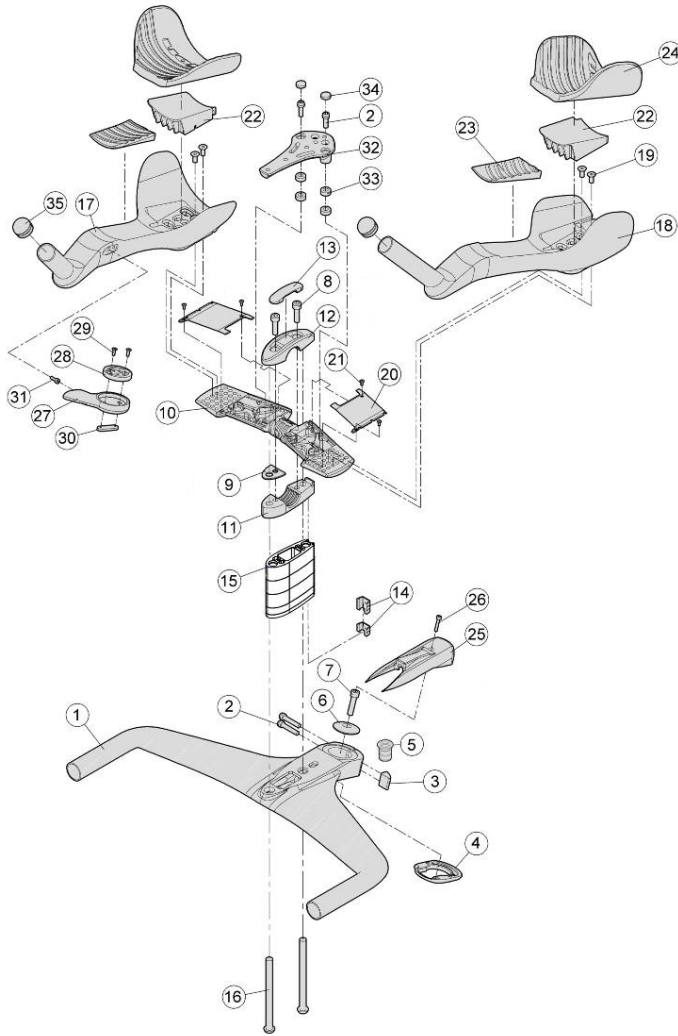


## Components

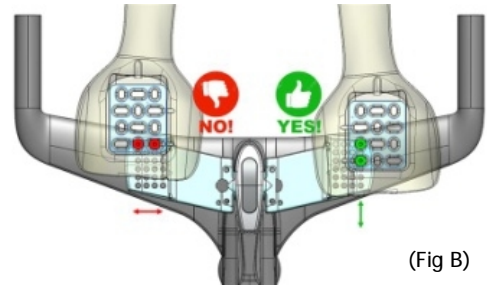
Follow the assembly order in the illustration:

- Metron TFA EVO Aerobar Basebar x1
- Steerer Clamp fixing Bolt (M5x22L) x4
- Steerer Clamp Nut x1
- Metron TFA EVO Base bar stem cover x1
- Expander Assembly x1
- Top Cap x1
- Top Cap fixing bolt (M6x25L) x1
- Metron TFA EVO Bridge clamp fixing bolts (M6x20L) x2
- Metron TFA EVO Bridge clamp-plate x1
- Metron TFA EVO Bridge clamp x1
- Metron TFA EVO Bridge clamp-lower x1
- Metron TFA EVO Bridge clamp-upper x1
- Metron TFA EVO Bridge clamp cover x1
- Metron TFA EVO Spacer cover x7
- Metron TFA EVO Spacer 5mm x1, 10mm x1, 20mm x5
- Metron TFA EVO Spacer fixing bolts (M8x40L-130L) x2
- Metron TFE Extension R x1
- Metron TFE Extension L x1
- Metron TFE Extension fixing bolts (M5x16L) x4
- Metron TFA EVO w/TFE Extension Bridge Cover (L+R) x1
- Metron TFA EVO Bridge Cover Fixing bolts (M2.5x5L) x4
- Metron TFE Extension Thermoplastic Plug (L+R) x1
- Metron TFE Extension Forearm pads (L+R) x1
- Metron TFE Extension Elbow pads (L+R) x1
- Metron TFA EVO Basebar stem cover x1
- Metron TFA EVO Basebar stem cover bolt (M3x16L) x1
- Metron TFE Extension Computer Mount Support x1
- Metron TFE Extension Computer Mount-Base x1
- Metron TFE Extension Computer Mount Base fixing bolts (M3x10L) x2
- Metron TFE Extension Computer Mount fixing nut spacer x1
- Metron TFE Extension Computer Mount fixing bolt (M4x15L) x1
- Metron TFA EVO Bottle cage bracket x1
- Metron TFA EVO Bottle cage bracket spacer x4
- Metron TFA EVO Bottle cage bracket bolt plugs x2
- Aero Extension Front Plug x2

**NOTICE** Components 23 and 27 ~ 31 are not included for TFE Pro.



(Fig A)



(Fig B)

## Aerobar installation

1. Make certain that the diameter of the steerer tube matches the Metron TFA EVO ① Stem Steerer Clamp size 1-1/8" (28.6mm).
2. Brake/electronic wiring should be run through the Metron TFA EVO Aerobar Basebar ① before installing. Install Steerer Clamp Bolt ② and Nut ③ to finger tighten, and avoid break the base bar or clamp wires.
3. Place the Base bar stem spacer ④ and Basebar ① onto the steerer tube. Adjust Expander Assembly ⑤ so it contacts the inner walls of the steerer tube but is still able to slide inside. Install the pre-adjusted Expander Assembly into the Carbon Steerer. Tighten the Expander Assembly with a 5mm hex wrench to torque of 61-92 kgf.cm / 6-9 Nm / 53-80 in.lbs. Tighten the Compression Cap ⑥ & Bolt ⑦ with a 4mm hex wrench to until proper bearing preload is achieved. **NOTICE** Proper bearing preload is apparent when there is no "knock" (fore / aft or up / down free play) in the headset assembly, while the bearings rotate freely (free steering motion). Do not tighten above 61 kgf.cm / 6 Nm / 53 in.lbs.
4. Using Bridge clamp fixing bolts ⑧ install Metron TFA EVO Bridge clamp plate ⑨, Extension Bridge ⑩ between Metron TFA EVO Bridge lower clamp ⑪ and upper clamp ⑫, and adjust to the desired angle. tighten fixing bolts ⑧ to torque of 61 kgf.cm / 6 Nm / 53 in.lbs. Install Bridge clamp cover ⑬, pay attention on the direction cover.
5. Slide spacer covers ⑭ into spacers ⑮ in need and reserve 5mm for cable routing. See Table 1 for Stack Spacers and bolt configuration to adjust the Bridge lower clamp ⑪ to the desired height. Use fixing bolts ⑯ tighten to torque of 92 kgf.cm / 9 Nm / 80 in.lbs. **NOTICE** The minimum height requires a 5mm spacer ⑮ to facilitate wiring, and the spacer cover ⑭ can be cut to the required height (Fig A).
6. Install Metron TFE Team Extensions ⑰⑱ tighten Extension Fixing Bolts ⑲ to torque of 41 kgf.cm / 4 Nm / 35 in.lbs. Avoid to clamp wires.
  - ⚠ WARNING** Extension Fixing bolts ⑲ must be placed in a fore aft position to ensure proper support of extension on bridge ⑩. (Fig.B)
7. Using Bridge Cover fixing bolts ⑳ install the Metron TFA EVO w/TFE Extension Bridge Covers L+R ㉑ to the Extension Bridge ⑩ tighten to torque of 5 kgf.cm / 0.5 Nm / 4 in.lbs. Avoid to clamp wires.
8. If need to adjust TFE Extensions ⑰⑱ angle, open Cover ⑬, use a 5mm hex key loosen two or three full turns Bridge clamp bolts ⑧ .Set to desired angle and tighten Bolts ⑧ to torque 61 kgf.cm / 6 Nm / 53 in.lbs. Install Bridge clamp cover ⑬, pay attention on the direction cover.
9. Fit Metron TFE Thermoplastic Plug ㉒ to TFE Extensions ⑰⑱, remove the adhesive velcro strips from Metron TFE Elbow & Forearm pads ㉓㉔ and attach to the top surface of left and right TFE Extensions ⑰⑱.
10. Ensure Aerobar is aligned straight and gradually tighten the Steerer Clamp Bolt ② by alternating turning each screw 1/4 to 1/2 turn at a time so both screws tighten simultaneously to 61 kgf.cm / 6 Nm / 53 in.lbs. DO NOT exceed maximum torque specification. Always use a calibrated torque wrench.
11. Install Stem cover ㉕ to Basebar ① use Stem cover Bolt ㉖ tighten to torque of 10 kgf.cm / 1 Nm / 9 in.lbs
12. Insert Computer Mount Base fixing bolts ㉗ to Base ㉘ Support ㉙ and nut spacer ㉚.
13. Using fixing bolt ㉛ install the Computer Mount- Support ㉙ to Metron TFE Extension R ⑰, Tighten to torque of 20 kgf.cm / 2 Nm / 18 in.lbs. Adjust Computer Mount - Base ㉘ to the desired fore aft position alternative tighten fixing bolts ㉗ to torque of 10 kgf.cm / 1 Nm / 9 in.lbs
14. Install bottle cage bracket ㉜ with Bracket spacer ㉝ to Extension Bridge ⑩. Bracket can be mounted in either direction depending on desired bottle placement. Torque fixing bolts ② to torque of 20 kgf.cm / 2 Nm / 18 in.lbs. Install bolt plugs ㉞.

## Wiring Installation Tips

1. Electronic wiring should be run through the Metron TFA EVO Aerobar Basebar ① and installed to electronic drive train junction. Before installing Extension Bridge ⑩ brake/electronic wiring should be run through the TFE Extensions ⑰⑱.
2. Installation is greatly improved when using a guide cable to gently pull the housing or electronic wires through the base bar from either direction.
3. Ensure enough wire is allowed from TFE extensions ⑰⑱ to be fed through the Extension bridge before attaching Covers ㉑ and account for the additional bends and length for needed riser spacers ⑮.
4. Electronic wire is allowed to be fed through the Bridge lower clamp ⑪ and attaching spacers ⑮ Attach Electronic wire to Bridge lower clamp ⑪ before installation, Slide spacer covers ⑭ into spacers ⑮ and reserve 5mm for wire fed through the Aerobar Basebar ①
  - ⚠ WARNING** Never attempt to modify the cable guide holes. Do not drill, saw, or file the holes larger or to a different shape. Modifications will void warranty and may result in failure of the handlebar while riding causing accident, injury, or death.
5. Install Metron TFE Extension Plugs ㉟ if not using shifters and press into Metron TFE Extension.

## Extension tilt adjustment range

Extensions		Metron TFE Team Edition	Metron TFE EVO	Metron TFE Pro
01	Reach (Center of Base bar to rear edge of armrest - 7.5mm Increments)	-41 to -79.2mm	-8 to -98mm	-41 to -79.2mm
02	Armrest width (outside-to-outside - 15mm Increments)	216.6 to 351.6mm	216 to 322mm	216.6 to 351.6mm
03	Armrest rotation	0 - 13°	0 - 13°	0 - 13°

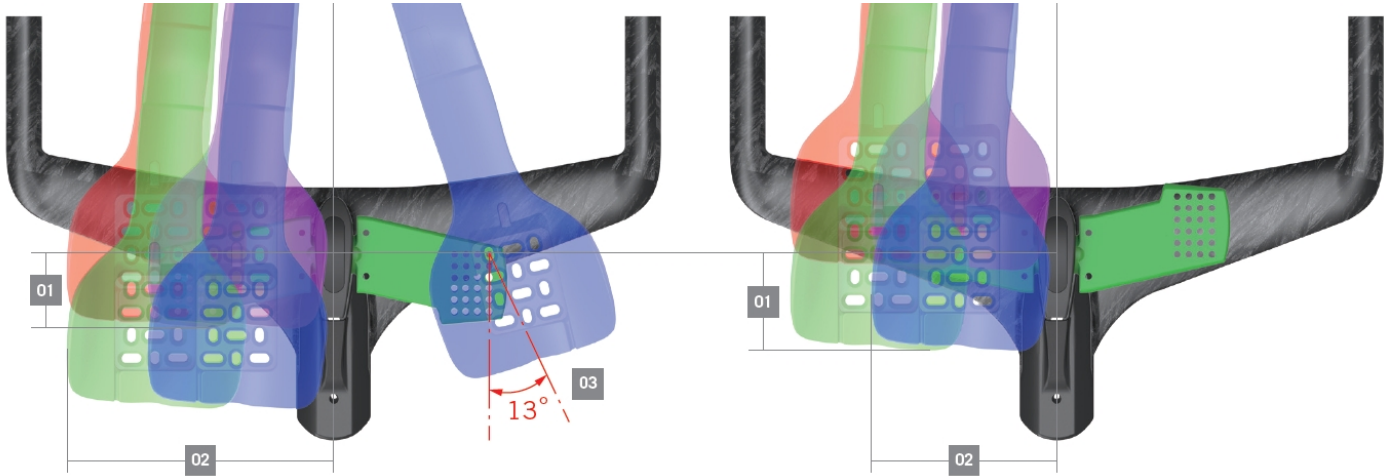


Table 1: Stack Spacer & Bolt Compatibility

Stack Height	Spacer <sup>(15)</sup>			Bolt <sup>(16)</sup> length	Spacer cover <sup>(14)</sup>
	5mm	10mm	20mm		
5mm	1	0	0	40mm	0
10mm	0	1	0	40mm	1
15mm	1	1	0	50mm	1
20mm	0	0	1	50mm	1
25mm	1	0	1	60mm	2
30mm	0	1	1	60mm	2
35mm	1	1	1	70mm	2
40mm	0	0	2	70mm	3
45mm	1	0	2	80mm	3
50mm	0	1	2	80mm	3
55mm	1	1	2	90mm	4
60mm	0	0	3	90mm	4
65mm	1	0	3	100mm	4
70mm	0	1	3	100mm	5
75mm	1	1	3	110mm	5
80mm	0	0	4	110mm	5
85mm	1	0	4	120mm	6
90mm	0	1	4	120mm	6
95mm	1	1	4	130mm	6
100mm	0	0	5	130mm	7

### Contact

If you have questions, please visit our web site technical section: <https://www.visiontechusa.com/en/support> or contact:

**FULL SPEED AHEAD EUROPE**  
VIA DEL LAVORO, 56  
20874 BUSNAGO, (MB), ITALY  
PH. +39 039 688 52 65

**FULL SPEED AHEAD USA**  
12212 CYRUS WAY  
MUKILTEO, WA 98275-5702  
PH. +1 425 488 8653

**FULL SPEED AHEAD ASIA**  
NO.6, WUGONG 8TH RD., WUFENG DIST.,  
TAICHUNG CITY 41353  
PH. +886 4 2331 9134

**FULL SPEED AHEAD CHINA**  
ROOM A405, BUILDING 2, NO.88, BAIFU ROAD,  
KUNSHAN DEVELOPMENT ZONE  
PH. +86 512 5702 2458

Notes: Specifications of product may be changed or improved for performance. Please refer to website periodically for technical updates and revised instructions.