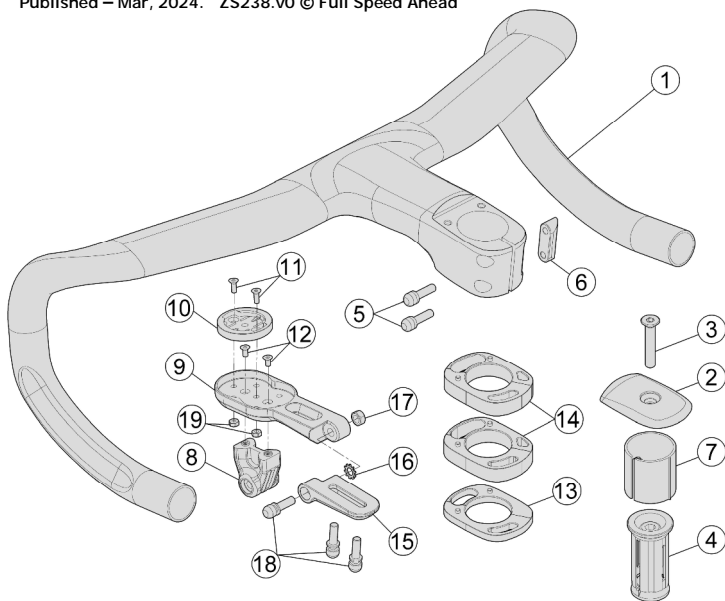


Metron 5D ACR EVO Integrated Installation Instructions

Published – Mar, 2024. ZS238.v0 © Full Speed Ahead



Introduction

Congratulations on your Full Speed Ahead product. Please read these instructions and follow them for correct use. Failure to follow the warnings and instructions could result in damage to product not covered under warranty, damage to bicycle; or cause an accident resulting in injury or death. Since specific tools and experience are necessary for proper installation, it is recommended that the product be installed by a qualified bicycle technician. FSA & Vision assumes no responsibility for damages or injury related to improperly installed components.

Warranty

Full Speed Ahead (FSA) warrants all FSA and Vision products to be free from defects in materials or workmanship for a period of two years after original purchase unless otherwise stated in the full warranty policy. The warranty is non-transferable and valid to the original purchaser of the product only. Any attempt to modify the product in any way such as drilling, grinding, and painting will void the warranty. For more information on warranty policy and instructions for completing a warranty claim, check out the Full Warranty Policy found at our website: <https://www.visiontechusa.com/en/technology>

Specification

Model Name Metron 5D ACR EVO Integrated

Components

Follow the assembly order in the illustration:

① Handlebar body x1	⑦ Shim MW113 (for Ø28.6mm steer tube) x1	⑬ 5mm Spacer x1
② Stem Top Cap x1	⑧ GoPro Fixed Seat x1	⑭ 10mm Spacer x2
③ Cap Fixing Bolts x1	⑨ 5D ACR EVO Computer Mount Bracket x1	⑮ 5D ACR EVO Computer Mount Fixed Seat x1
④ Expander Assembly x1	Garmin/wahoo	⑯ Computer Mount Washer x1
⑤ Steerer Clamp Bolt x2	⑩ Control Center Base x1 - Garmin/wahoo	⑰ 5D ACR EVO Computer Mount Fixed Nut x1
⑥ Steerer Clamp Nut x1	⑪ Control Center Base Bolt 8L x2	⑱ 5D ACR EVO Computer Mount Fixed Bolts x3
	⑫ Control Center Base Bolt 12L x2	⑲ 5D ACR EVO Computer Fixed Nut x2

Handlebar Installation

1. Cut steerer tube according to manufacturer's instructions. Ensure there are no sharp burrs on the steerer tube. Select correct Spacers ⑬, ⑭ for the desired height of Handlebar.
2. It is recommended to apply a light coat of carbon assembly paste (ME068) on steerer tube. Slide Handlebar ① fully on to steerer tube. **⚠ WARNING** Do not use grease on carbon steerers. Only use carbon assembly paste (ME068).
3. Pre-adjust Expander ④ so it contacts the inner walls of the steerer tube but still can slide inside. Install the pre-adjusted Expander into steerer tube and tighten Expander ④ with a 6mm hex wrench to 61-92 kgf.cm / 6-9 Nm / 53-80 in.lbs. **⚠ CAUTION** Do not over-tighten the Expander ④ above 92 kgf.cm / 9 Nm / 80 in.lbs. damage may occur. Install Fixing Bolt ③ and Top Cap ② into the expander by use Fixing Bolt ③. Tighten the Fixing Bolt ③ over torque 31 kgf.cm / 3 Nm / 27 in.lbs.
4. Ensure handlebar is aligned straight and gradually tighten the Stem Screws ⑤ and Stem Nuts ⑥, by alternating turning each screws 1/4 to 1/2 turn at a time so both screws tighten simultaneously to 51-61 kgf.cm / 5-6 Nm / 44-53 in.lbs. DO NOT exceed maximum torque specification. Always use a calibrated torque wrench.

Cable Installation

5. The brake and shifter housing can be routed internally through the cable guide channel. Consult brake and shifter manufacturer for specific instruction of cable routing. **⚠ WARNING** Never attempt to modify the cable guide holes. Do not drill, saw or file the holes larger or to a different shape. The position and size has been carefully engineered to maintain the strength of the handlebar. Any modification of the cable guide holes will void the warranty and may lead to premature failure of the handlebar, leading to possible loss of control of the bicycle resulting in injury or death.

5D ACR EVO Computer Mount Installation

6. Install EVO Computer Mount Bracket ⑨, Washer ⑯ to Fixed Seat ⑮ use Fixed Bolts ⑱ and Fixed Nut ⑰, tighten Fixed Bolts ⑱ to 31 kgf.cm / 3 Nm / 27 in.lbs. Do apply torque over 31 kgf.cm / 3 Nm / 27 in.lbs.
7. Install EVO Computer Fixed Seat ⑮ on to bottom of Handlebar body ①. Adjust to desired position and alternately tighten Fixed Bolts ⑱ to 31 kgf.cm / 3 Nm / 27 in.lbs. Do apply torque over 31 kgf.cm / 3 Nm / 27 in.lbs.
8. Install Control Center Base ⑩. Adjust to desired position and alternately tighten Control Center Base Bolts ⑪ with Nut ⑲. Do not tighten over torque 20 kgf.cm / 2 Nm / 18 in.lbs.
9. Install GoPro Adapter ⑧ if GoPro Mount needed. Insert Center Base bolts ⑫ through EVO Computer Mount Bracket ⑨ to tighten with the GoPro Adapter ⑧ to torque 20kgf.cm / 2Nm / 18 in.lbs

WWW.VISIONTECHUSA.COM

Contact

If you have questions, please visit our web site technical section: <https://www.visiontechusa.com/en/support> or contact:

Full Speed Ahead, USA
12212 Cyrus Way Mukilteo, WA 98275-5702
Tel: 1_425_488_8653 Fax: 1_425_489_1082

Full Speed Ahead, Europe
Via Del Lavoro, 56 20874 Busnago, Milan, Italy
Tel: +39_039_688_5265 Fax: +39_039_682_3336

TH INDUSTRIES / FSA Asia
NO.6, Wu-gong 8th Rd., Wufeng Dist., Taichung City 41353, Taiwan (R.O.C.)
Tel: +886_4_2331_3134 Fax: +886_4_2331_3114

Notes: Specifications of product may be changed or improved for performance. Please refer to website periodically for technical updates and revised instructions. Printed in Taiwan.